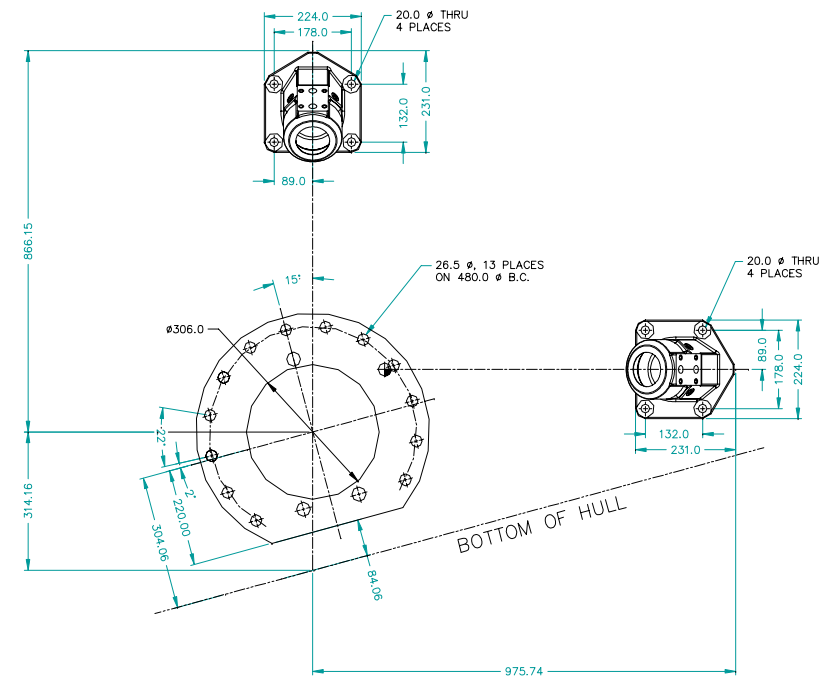
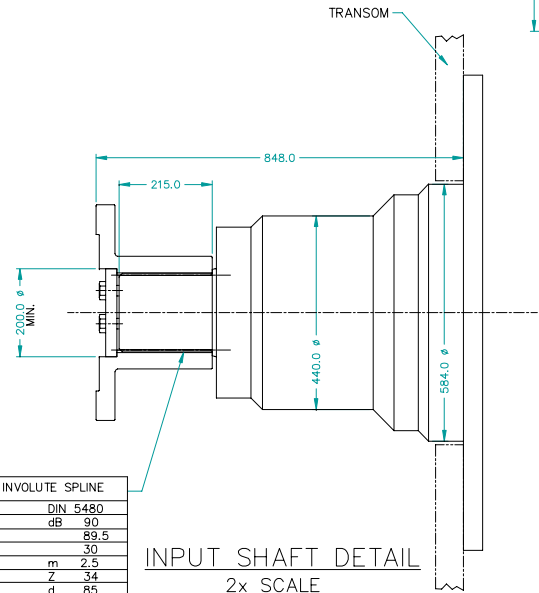


TOP VIEW

- NOTES:
1. THIS DRAWING IS TO BE USED AS A GUIDE ONLY. PLEASE REFER TO THE TWIN DISC INSTALLATION MANUAL FOR INSTALLING THE DRIVE AND CYLINDERS.
 2. TRANSOM ANGLE FOR ASD UNITS TO BE 6 DEGREES TO VERTICAL, PLUS OR MINUS 1 DEGREE, AS SHOWN IN THE SIDE VIEW. A MOUNTING WEDGE IS REQUIRED FOR TRANSOM ANGLES OTHER THAN 6 DEGREES.
 3. BACKING PLATES OF SAME APPROXIMATE DIMENSIONS AS SHOWN FOR EQUIPMENT FOOTPRINT ARE SUPPLIED. ADEQUATE CLEARANCE INSIDE VESSEL TRANSOM SHOULD BE PROVIDED.
 4. DRILL ALL HOLES PERPENDICULAR TO TRANSOM.

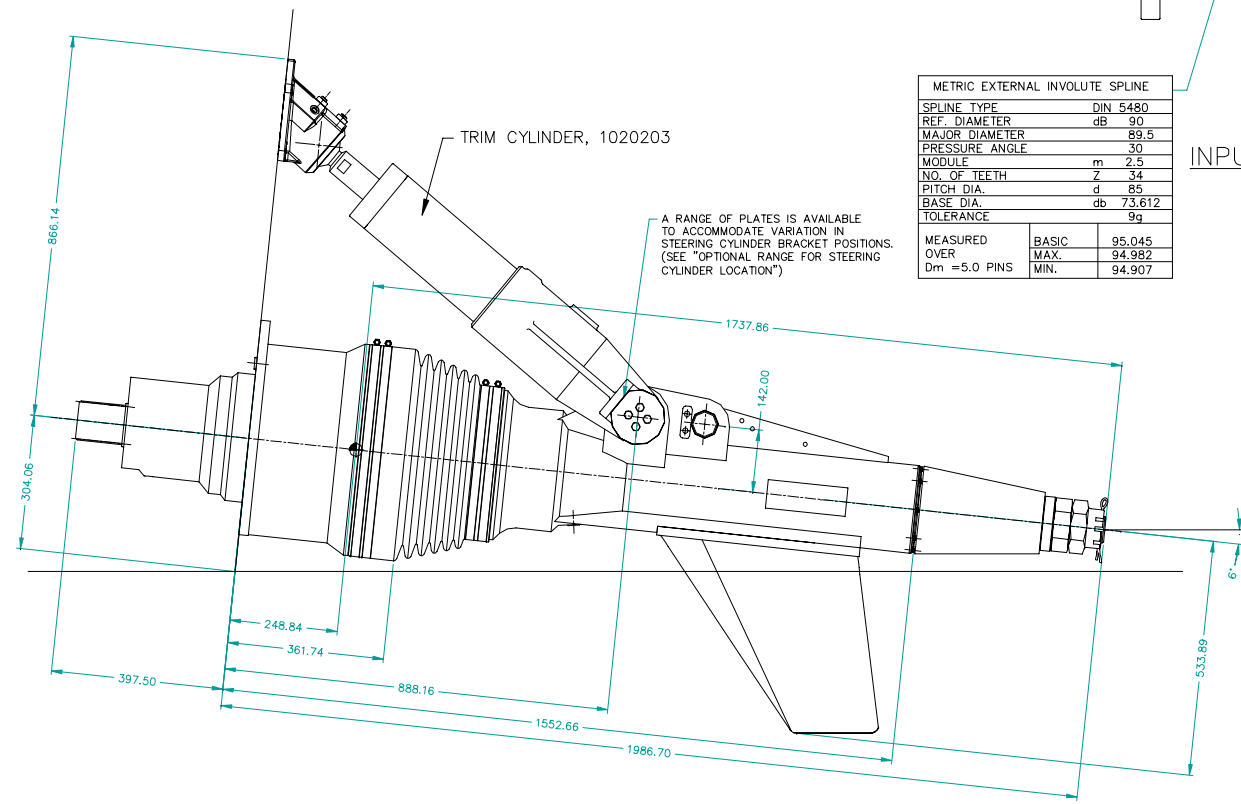


END VIEW



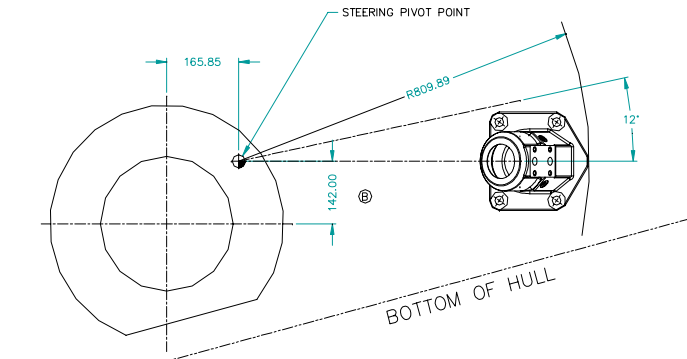
INPUT SHAFT DETAIL
2x SCALE

METRIC EXTERNAL INVOLUTE SPLINE		
SPLINE TYPE	DIN 5480	
REF. DIAMETER	db	90
MAJOR DIAMETER	db	89.5
PRESSURE ANGLE		30
MODULE	m	2.5
NO. OF TEETH	Z	34
PITCH DIA.	d	85
BASE DIA.	db	73.512
TOLERANCE		9g
MEASURED OVER	BASIC	95.045
	MAX.	94.982
	MIN.	94.907
Dm = 5.0 PINS		



SIDE VIEW

A RANGE OF PLATES IS AVAILABLE TO ACCOMMODATE VARIATION IN STEERING CYLINDER BRACKET POSITIONS. (SEE "OPTIONAL RANGE FOR STEERING CYLINDER LOCATION")



OPTIONAL RANGE FOR STEERING CYLINDER LOCATION

NOTE:
A RANGE OF STEERING CYLINDER BRACKET POSITIONS IS SHOWN TO ALLOW FOR VARYING DEADRISE ANGLES.

- SHEET 1
PARTS DRAWING
- SHEET 2
ASSEMBLY NOTES
- SHEET 3
INSTALLATION
INTERFACE
- SHEET 4
INBOARD STEERING
CYLINDER ARRANGEMENT

METRIC
THIRD ANGLE
PROJECTION

REF. B.O.M.'s:
DRIVE - 1020120
STEERING CYLINDER GROUP - 1020325
TRIM CYLINDER GROUP - 1020324

NOTICE: THIS PRINT CONTAINS PROPRIETARY INFORMATION AND IS NOT TO BE USED IN ANY MANNER DETRIMENTAL TO THE INTERESTS OF TWIN DISC, INCORPORATED RACINE, WI 53403 - USA
THIS NOTICE IS NOT INTENDED TO WAIVE OR LIMIT RIGHTS GRANTED TO THE U.S. GOVERNMENT OR OTHERS BY CONTRACT.

MATERIAL	WEIGHT	UNLESS OTHERWISE SPECIFIED DIMENSIONS ARE IN MILLIMETERS	DATE
TREAT	NO.	MACHINED DIMENSIONS	15-30-01
SURFACE TREATMENT	FIRST USE	ALL ANGULAR TOLERANCES AT 90° UNLESS OTHERWISE SPECIFIED	SCALE
	ASSY: ASD 15	PER ANSI Y14.5M 1987	3/16
	MODEL	DRN: D. MEYERS	
	NAME	CHK: FN	
		APPR: FN	

TWIN DISC
RACINE, WI 53403 - USA
1020119
SHEET 3 OF 4 REV B