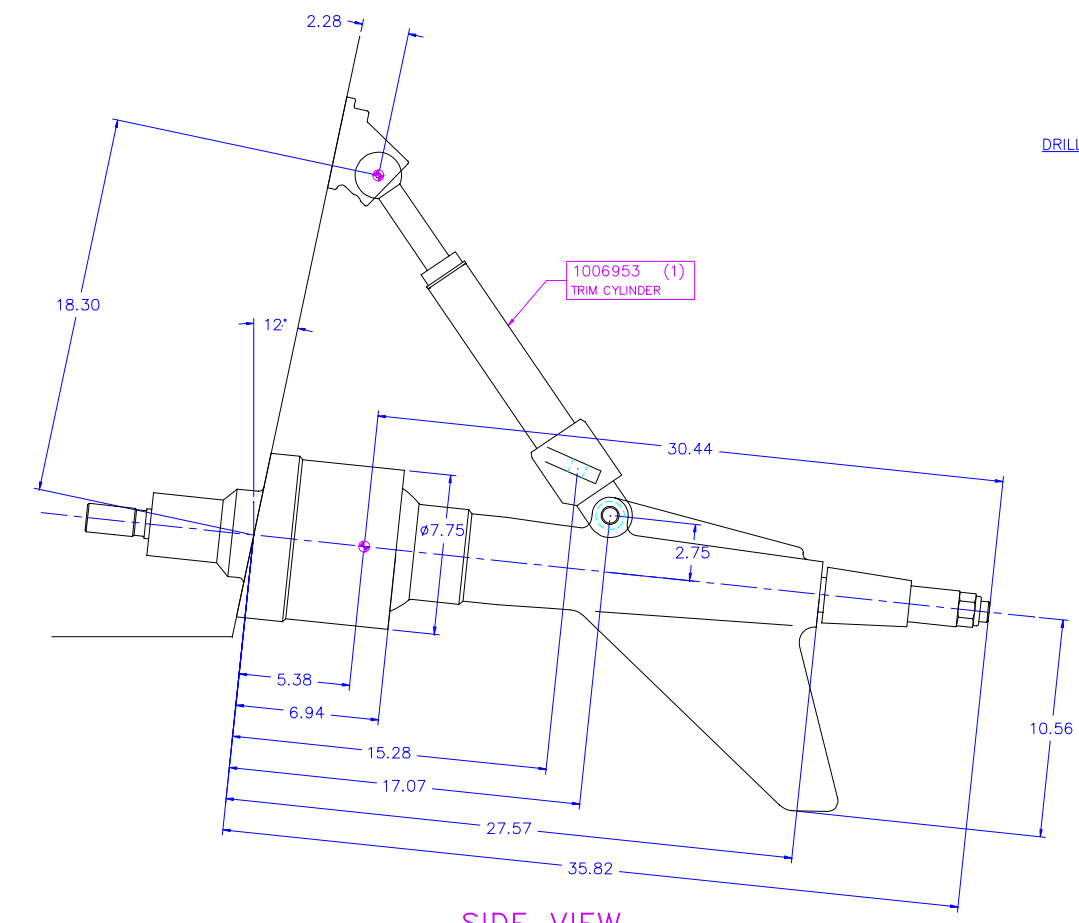
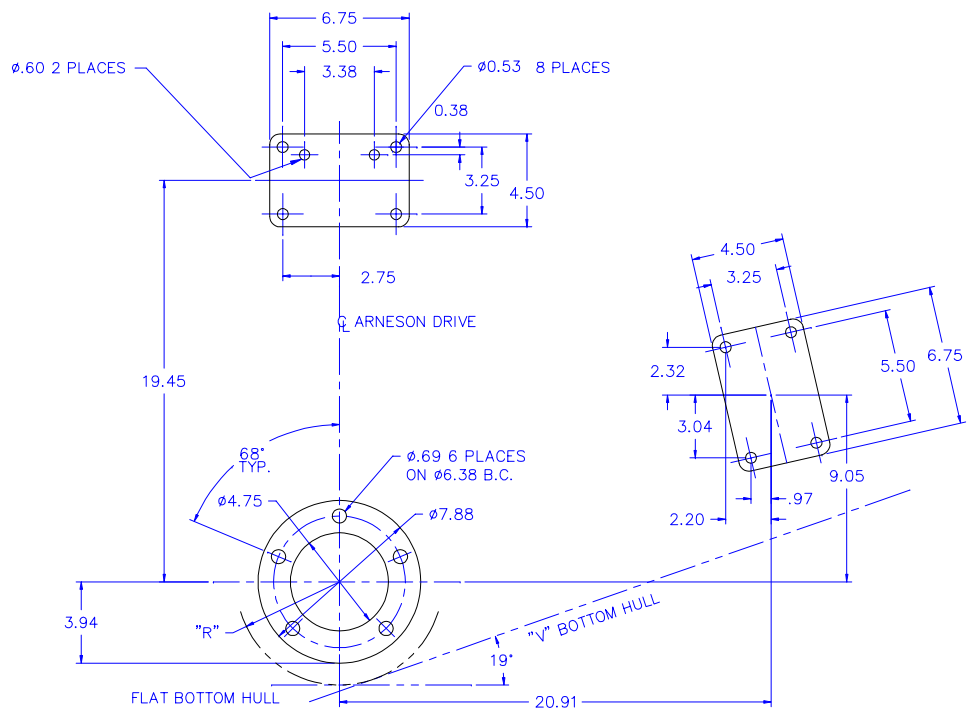


TOP VIEW



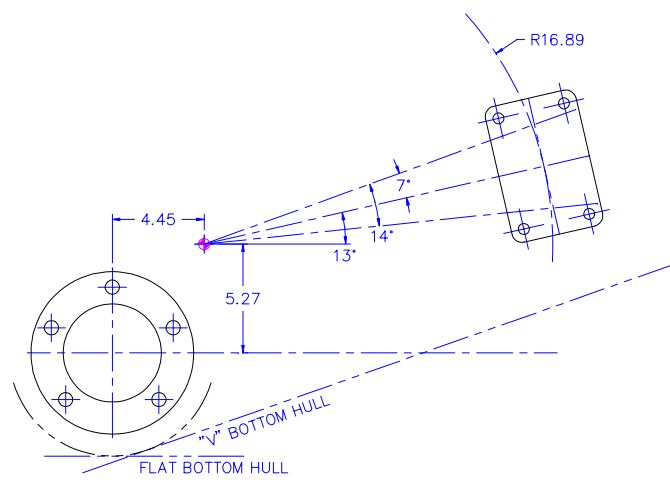
SIDE VIEW



END VIEW  
(DIMENSIONS ARE PARALLEL WITH TRANSOM)

**CAUTION**  
DRILL HOLES PERPENDICULAR TO TRANSOM

TRANSOM ANGLE	"R" (INCHES)
10°	4.75
11°	4.88
12°	5.00
13°	5.12
14°	5.25



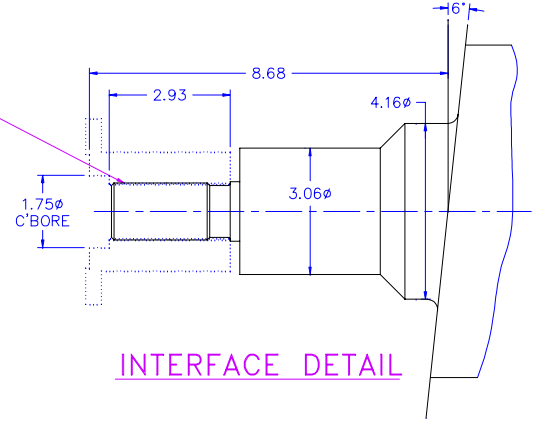
OPTIONAL RANGE FOR STEERING CYLINDER LOCATION

**NOTES:**

1. THIS DRAWING IS TO BE USED AS A GUIDE ONLY. PLEASE REFER TO THE TWIN DISC INSTALLATION MANUAL FOR INSTALLING THE DRIVE AND CYLINDERS.
2. ALL ASD UNITS MUST RUN AT 6° ANGLE. ASD 6 UNITS WILL ACHIEVE 6° ANGLE ON A 12° TRANSOM. ANY DEVIATION FROM 12° TRANSOM WILL REQUIRE USE OF WEDGE TO ACHIEVE 6° ANGLE.
3. BACKING PLATES OF SAME APPROXIMATE DIMENSIONS AS SHOWN FOR EQUIPMENT FOOTPRINT ARE SUPPLIED. ADEQUATE CLEARANCE INSIDE VESSEL TRANSOM SHOULD BE PROVIDED.
4. DRILL ALL HOLES PERPENDICULAR TO TRANSOM.

**SPLINE DATA**  
MODIFIED INTERNAL INVOLUTE, FLAT ROOT  
SIDE FIT, CLASS 5

NO OF TEETH	32
SPLINE PITCH	24/48
PRESSURE ANGLE	30°
PITCH DIA.	1.333
MAJOR DIA.	1.3775/1.3765
MINOR DIA.	1.309/1.307
CIRCULAR SPACE WIDTH	
MAX ACTUAL	.0756
MIN EFFECTIVE	.0741
BASE CIRCLE Ø	1.1547



INTERFACE DETAIL

REV	ZONE	CH. NO.	DATE	REV	ZONE	CH. NO.	DATE

NOTICE: THIS PRINT CONTAINS PROPRIETARY INFORMATION AND IS NOT TO BE USED IN ANY MANNER DETRIMENTAL TO THE INTERESTS OF TWIN DISC, INCORPORATED RACINE, WI 53403 - USA THIS NOTICE IS NOT INTENDED TO NULLIFY OR LIMIT RIGHTS GRANTED TO THE U.S. GOVERNMENT OR OTHERS BY CONTRACT.

MATERIAL	WEIGHT	WR
HEAT TREAT	LBS.	LBS. IN
SURFACE TREATMENT	FIRST USE	ASSY.
	MODEL	NAME

UNLESS OTHERWISE SPECIFIED	DATE
MACHINED DIMENSIONS	9-16-97
XXX ±0.030	SCALE
XXX ±0.010	1:4
XXX ±0.005	DRN:
ALL ANGULAR TOLERANCES ±1°	TBM
GEOMETRIC TOLERANCING PER ANSI Y14.5M-1982	CHK:
	FN
	APPD:
	FN

THIRD ANGLE PROJECTION  
SIMILAR TO  
002613  
1010975

**TWIN DISC**  
INCORPORATED  
RACINE, WI 53403 - USA  
1010975A  
SHEET 1 OF 1 REV

**INSTALLATION**