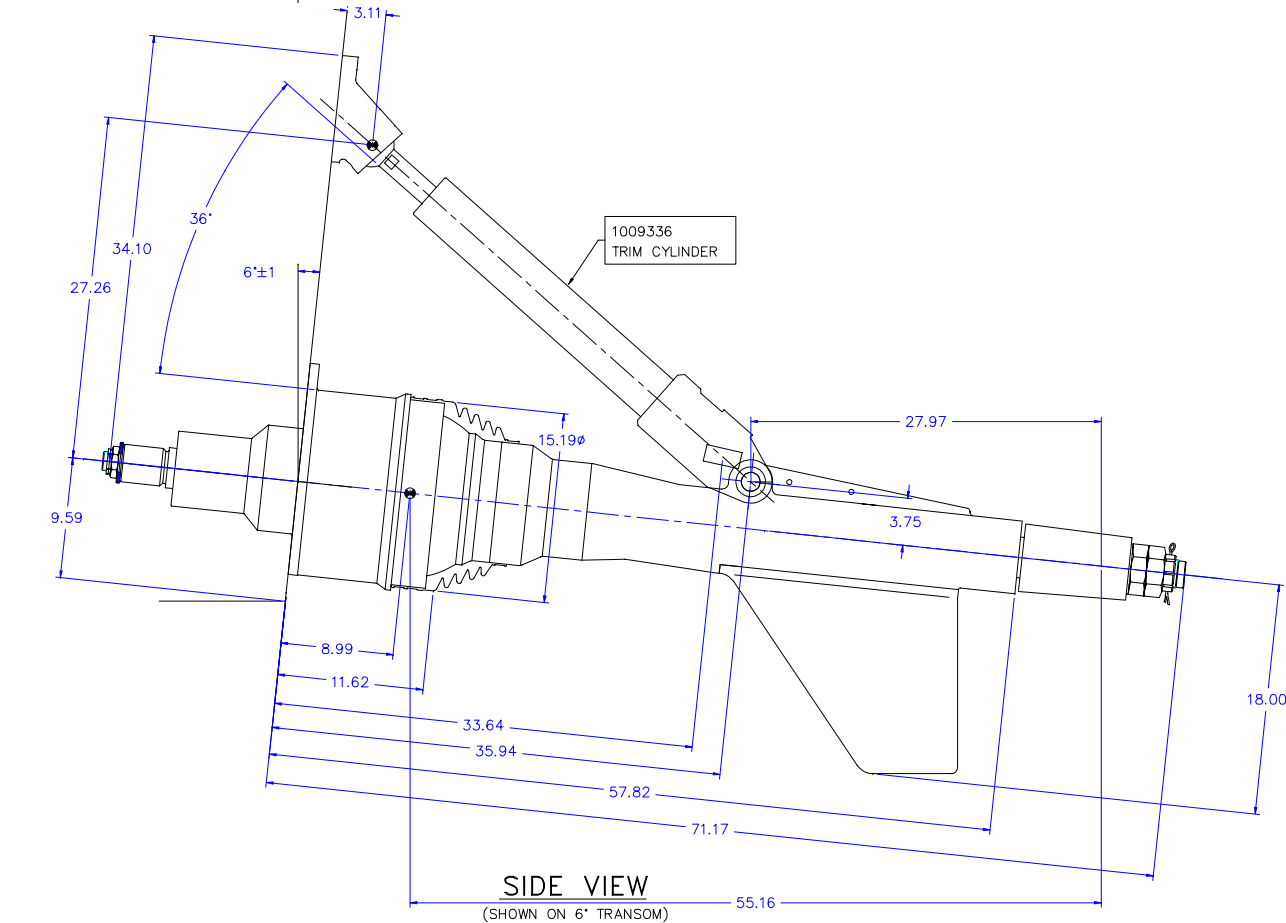
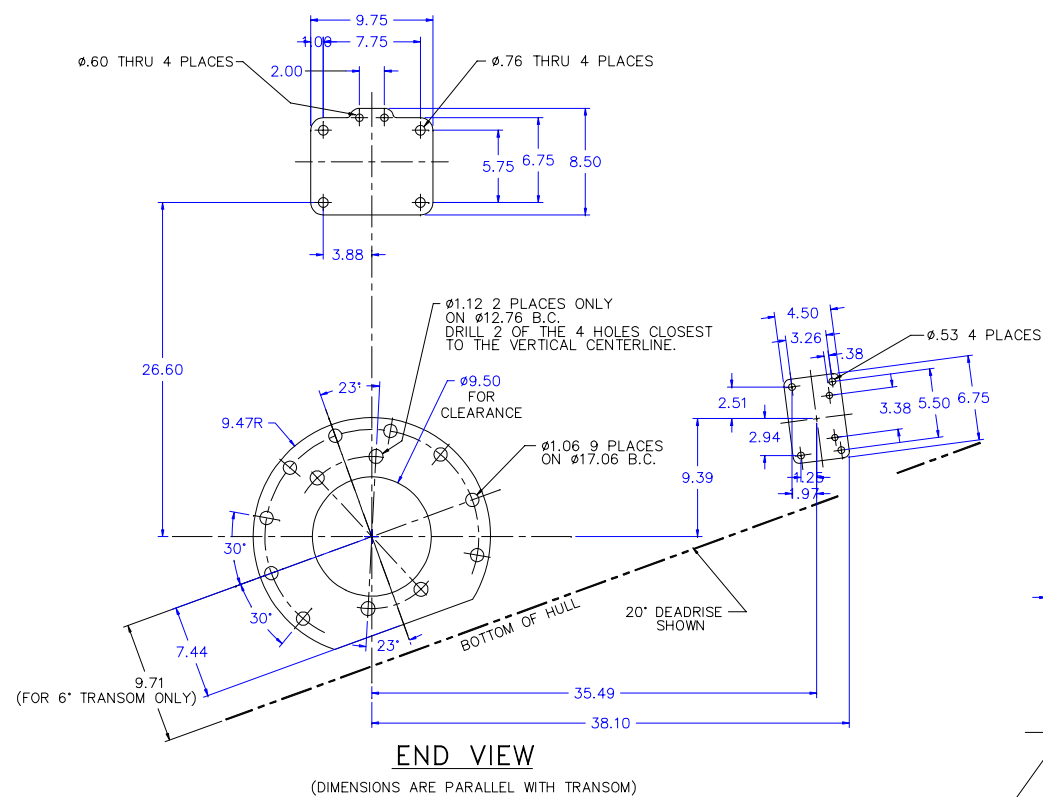


TOP VIEW

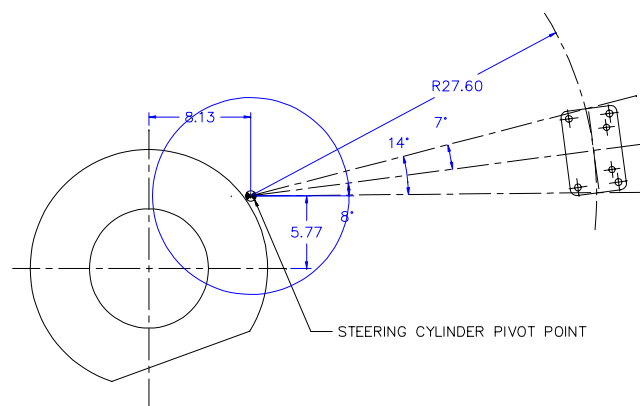


SIDE VIEW
(SHOWN ON 6" TRANSOM)



END VIEW

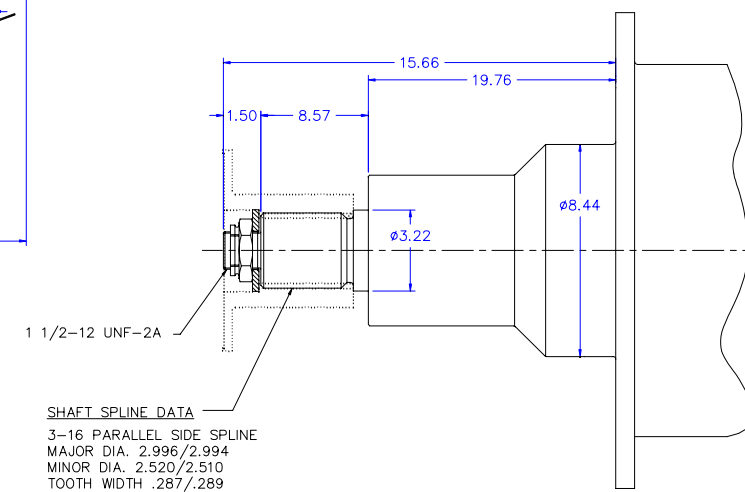
(DIMENSIONS ARE PARALLEL WITH TRANSOM)



OPTIONAL RANGE FOR STEERING
CYLINDER LOCATION

NOTES:

1. THIS DRAWING IS TO BE USED AS A GUIDE ONLY. PLEASE REFER TO THE TWIN DISC INSTALLATION MANUAL FOR INSTALLING THE DRIVE AND CYLINDERS.
2. TRANSOM ANGLE FOR ASD UNITS TO BE 6 DEGREES TO VERTICAL, PLUS OR MINUS 1 DEGREE, AS SHOWN IN THE SIDE VIEW. A MOUNTING WEDGE IS REQUIRED FOR TRANSOM ANGLES OTHER THAN 6 DEGREES.
3. BACKING PLATES OF SAME APPROXIMATE DIMENSIONS AS SHOWN FOR EQUIPMENT FOOTPRINT ARE SUPPLIED. ADEQUATE CLEARANCE INSIDE VESSEL TRANSOM SHOULD BE PROVIDED.
4. DRILL ALL HOLES PERPENDICULAR TO TRANSOM.



INPUT SHAFT DETAIL

SCALE: 2:1

SHAFT SPLINE DATA
3-16 PARALLEL SIDE SPLINE
MAJOR DIA. 2.996/2.994
MINOR DIA. 2.520/2.510
TOOTH WIDTH .287/.289

SYMBOL CHARACTERISTIC	SYMBOL	MODIFIER
FLATNESS		MMC (MAX. MATERIAL CONDITION)
PARALLELISM		RFS (REGARDLESS OF FEATURE SIZE)
PERPENDICULARITY		
CIRCULAR RUNOUT		SYMBOL NAME
TOTAL RUNOUT		DATUM FEATURE
POSITION		DIAMETER

NOTE: UNTOLERANCED DIMENSIONS LOCATING TRUE POSITION ARE BASIC.

REF. 002617

SYM. ZONE	CHANGE	CH. NO.	DATE	BY	SYM. ZONE	CHANGE	CH. NO.	DATE	BY
A	REDRAWN, REVISED	24751	12/10/93	JK					

SIMILAR TO NOTICE THIS PRINT CONTAINS PROPRIETARY INFORMATION AND IS NOT TO BE USED IN ANY MANNER DETRIMENTAL TO THE INTERESTS OF TWIN DISC, INCORPORATED RACINE, WISCONSIN. THIS NOTICE IS NOT INTENDED TO NULLIFY OR LIMIT RIGHTS GRANTED TO THE U.S. GOVERNMENT OR OTHERS BY CONTRACT.

MATERIAL	HEAT TREAT	DATE	11/19/93
SURFACE TREATMENT	WEIGHT LBS. IN. ³	SCALE	1:7
TOLERANCES UNLESS NOTED .X±.10 .XX±.010	NAME	FIRST USE ASSY. MODEL	ASD 14
INSTALLATION		CHK.	GAM
		APPD.	GAM

TWIN DISC
INCORPORATED
RACINE, WI 53403
ARNESON SURFACE
DRIVES
1011057

F

E

D

C

B

A