

**FEATURES AND BENEFITS**

Surface piercing drive system with integral marine gear

Based on the Arneson ASD 8 which is proven reliable in thousands of applications world wide.

Suited for modern high performance marine diesel engines. High propeller shaft torque rating allows selection of optimal gear ratio.

Steerable thrust provides high maneuverability at all speeds in forward and reverse.

Highly efficient power transmission through double cardan joint for lower fuel consumption and lower lube oil temperatures.

High efficiency for all planing craft provides reduced fuel consumption and increased range.

Shallow draft

Compact arrangement saves space in the engine room. Exposed driveline and related maintenance is eliminated. No complicated engine alignment required.

All in water components are made of corrosion resistant bronze or stainless steel providing years of service.

Reduced maintenance - All Arneson Surface Drives utilize long life components and corrosion resistant materials to provide long service intervals and virtually eliminate down time for repairs.

PLEASURE CRAFT INPUT RATINGS*

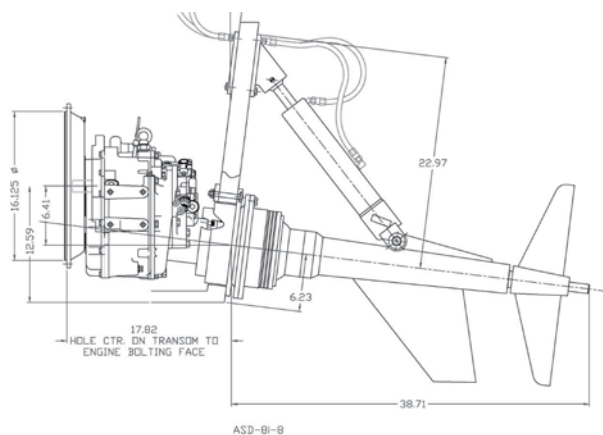
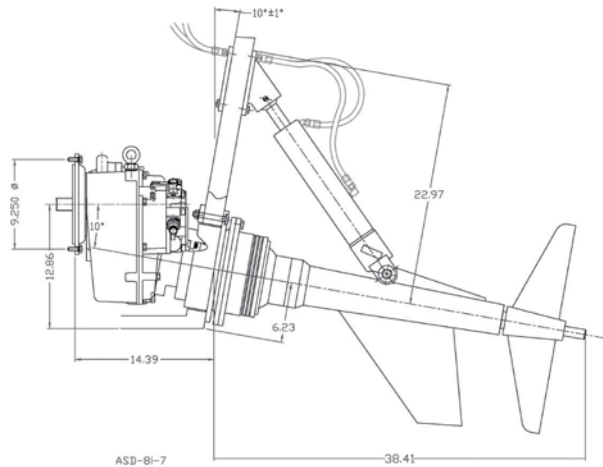
MODEL	PROPELLER SHAFT TORQUE CAPACITY	@ 2500 RPM	@ 2800 RPM	@ 3200 RPM
ASD 8i-7	1355 Nm (1000 lb.-ft.)	209 kW (280 hp)	235 kW (315 hp)	268 kW (360 hp)
ASD 8i-8	1627 Nm (1200 lb.-ft.)	308 kW (413 hp)	345 kW (463 hp)	384 kW (515 hp)

Ratings shown are to be used for reference only. Please consult Twin Disc for final application approvals.

**Ratings shown are for use with standard right hand rotation engines.*

SPECIFICATIONS

MODEL	INTEGRAL 7	INTEGRAL 8
Weight*	202 kg (445 lbs.)	243 kg (535 lbs.)
Nominal Shaft Diameter	50.8 mm (2")	50.8 mm (2")
Trim Angle	+/- 7.5°	+/- 7.5°
Steering Angle	+/- 20°	+/- 20°
Gear Ratios	1.53:1 2.08:1	1.13:1 1.28:1 1.54:1 1.75:1 2.00:1



* Approximate weight of complete system including drive, marine gear, transom adapter, trim and steering cylinders, trim pumps and hydraulic steering.

